

# ARTIS INTEGRATION MANAGER FOR MITSUBISHI ELECTRIC CNC

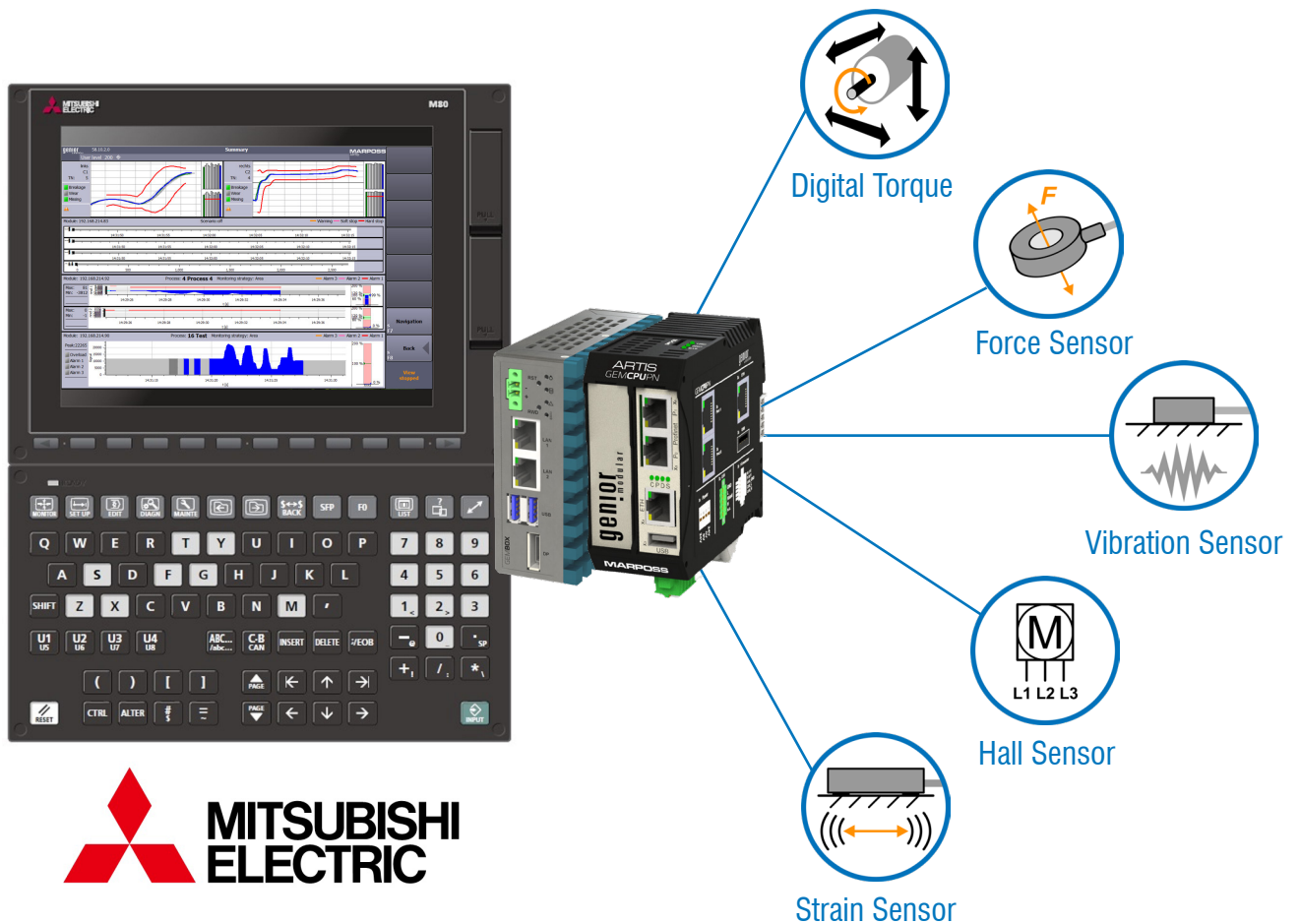


## Integration without plc modification

The new integration solution for Genior and your machines

### Benefits

- Keep in control of the full installation process
- Reduced cost & time of the installation
- Operate by CNC function of Remote desktop connection.
- Compatible with different CNC models



## Example of System

### MACHINE TOOL

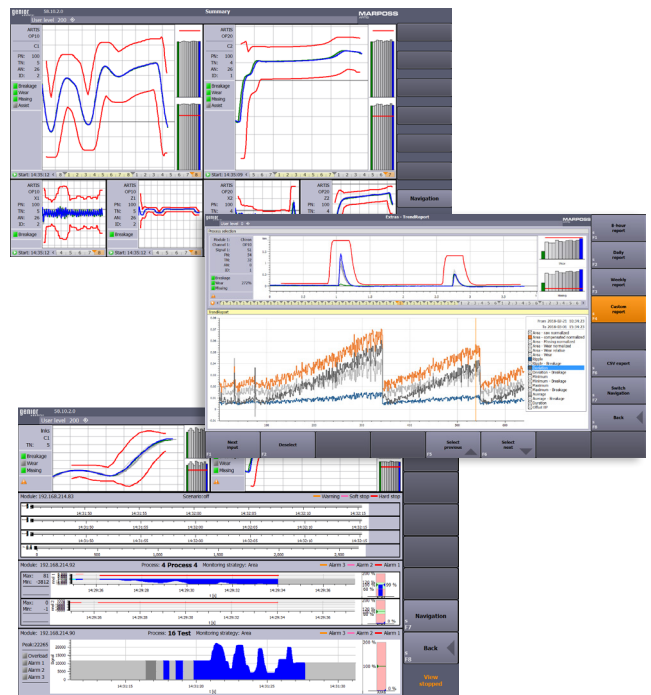
The diagram illustrates a CNC system setup. On the left is a Mitsubishi M80 CNC machine tool with a remote desktop function. On the right is a control cabinet containing the ARTIS Monitoring System (genior modular), an Industrial PC (GEMBOX), and software (AIM V4). An Ethernet connection links the machine tool to the control cabinet.

### ARTIS MONITORING SYSTEM makes it possible to:

- Collect Program No., Tool No., Process No., automatically.
- Send Alarm signal to CNC and stop the Machine when trouble occur during Machining Process Immediately.
- Determinate “the threshold” by learning function.
- Set parameters flexible.
- Control various sensors.

### AIM FOR MITSUBISHI makes it possible to:

- Build Monitoring system easily when machines have these CNC:  
M700/M70M/E70, M700V/M70V  
M800/M80/E80, M800V/M80V and so on.
- Operate the Monitoring system by CNC Function “Remote Desktop Connection”. (some CNC needs option).
- Install without modification of PLC, Ladder and I/O.



[www.marposs.com](http://www.marposs.com)

For a full list of address locations, please consult the Marposs official website

Edition 09/2022 – Specifications are subject to modifications  
© Copyright 2010-2022 MARPOSS S.p.A. (Italy) – All rights reserved.

MARPOSS, and Marposs product names/signs mentioned or shown herein are registered trademarks or trademarks of Marposs in the United States and other countries. The rights, if any, of third parties on trademarks or registered trademarks mentioned in this publication are acknowledged to the respective owners.

Marposs has an integrated system for Company quality, environmental and safety management, with ISO 9001, ISO 14001 and OHSAS 18001 certification.



[www.artis.de](http://www.artis.de)

